



TECHNOTRON
M E T A L

Floor to Floor-TM Substructure System

Technotron-Metal designed the Floor to Floor-TM substructure system to minimize the number of fixing points between the facade and the wall of the building. It is mainly intended for anchoring to the front walls of ceiling boards and is suitable for all types of facade expanded metal.

SUBSTRUCTURE SYSTEM - FLOOR TO FLOOR-TM

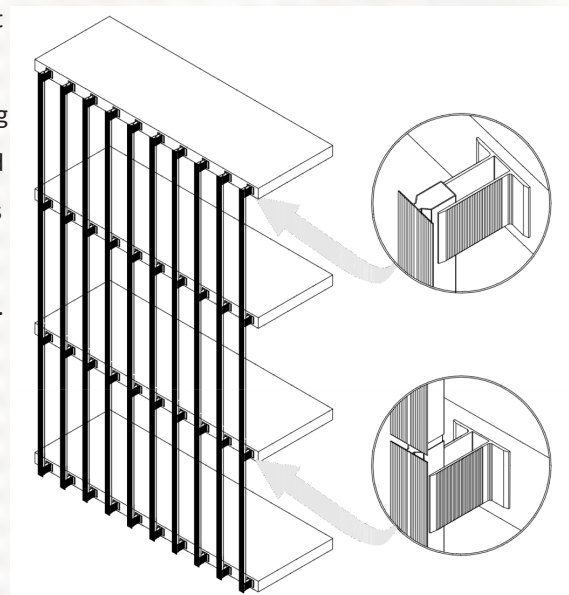
The Floor to Floor-TM is a substructure system designed to be anchored into the facing of ceiling boards.

The minimization of the number of anchor points with maximum spacing is the main advantage of this substructure system that can also be used in older buildings with a larger floor span.

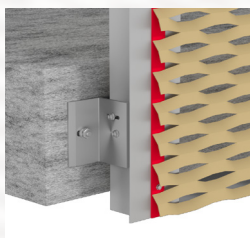
The main component of the substructure is a bearing bracket with a wall thickness of 8 mm, which meets the increased requirements on the load capacity and strength of supporting parts so that they can transfer the considerable stress caused by the layout of the anchor points only at the level of ceilings between the storeys.

The system is suitable for all types of façade expanded metal. It can be mounted on the substructure as follows:

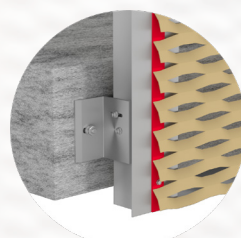
1. Expanded metal in frame
2. Expanded metal with back strips
3. Expanded metal anchored through liners



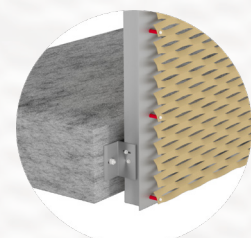
Expanded metal in frames



Expanded metal on strips

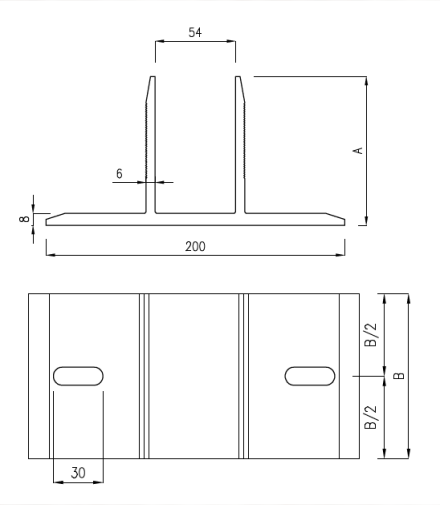


Expanded metal on supports



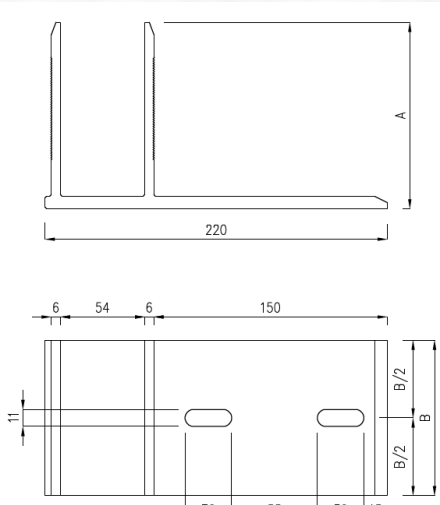
SUBSTRUCTURE SYSTEM - FLOOR TO FLOOR-TM

GP-AL-TM-K1 bracket



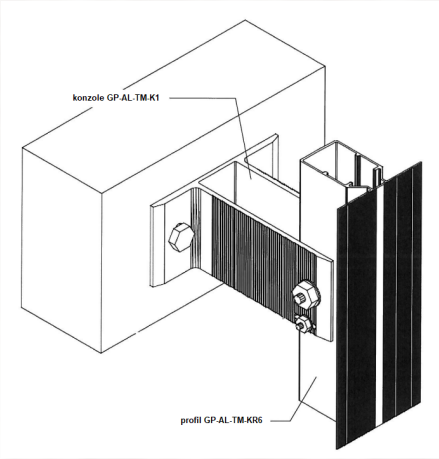
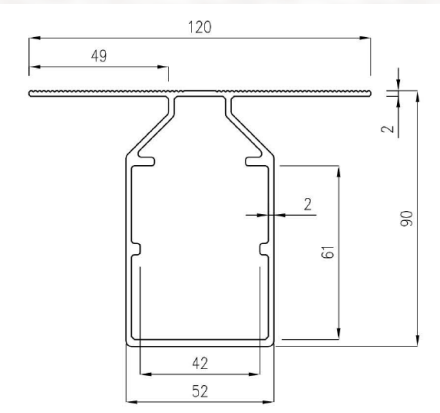
Designation	A	B
GP-AL-TM-K1-100-80	100	80
GP-AL-TM-K1-100-150	100	100
GP-AL-TM-K1-100-120	100	120
GP-AL-TM-K1-100-150	100	150
GP-AL-TM-K1-120-80	120	80
GP-AL-TM-K1-120-100	120	100
GP-AL-TM-K1-120-120	120	120
GP-AL-TM-K1-120-150	120	150
GP-AL-TM-K1-200-80	200	80
GP-AL-TM-K1-200-100	200	100
GP-AL-TM-K1-200-120	200	120
GP-AL-TM-K1-200-150	200	150
GP-AL-TM-K1-100-80	100	80
GP-AL-TM-K1-100-150	100	100
GP-AL-TM-K1-100-120	100	120
GP-AL-TM-K1-100-150	100	150

GP-AL-TM-K2 bracket



Designation	A	B
GP-AL-TM-K2-100-80	100	80
GP-AL-TM-K2-100-150	100	100
GP-AL-TM-K2-100-120	100	120
GP-AL-TM-K2-100-150	100	150
GP-AL-TM-K2-120-80	120	80
GP-AL-TM-K2-120-100	120	100
GP-AL-TM-K2-120-120	120	120
GP-AL-TM-K2-120-150	120	150

GP-AL-TM-KR6 T-section



Designation:	Section length	Weight
GP-AL-TM-KR6	3100 mm	2,305 kg/m



EN 15085-2



ISO 9001



ISO 3834-2



EN 1090-1



EN 1090-2



EN 1090-3



TECHNOTRON
M E T A L

+420 601 365 730

info@eplechy.cz

technotron-metal.cz/en

Technotron-Metal, s.r.o.

Přiborska 1494

738 01 Frýdek-Místek, Czech Republic

IČ: 02299160, DIČ: CZ02299160